

# Billboard

Newsletter of The Bonsai Society of Upstate New York



## Harvey Carapella

### Literati Style of Bonsai



Harvey working on one of his many fine bonsai

At our January meeting, Harvey Carapella will be talking about the Literati style of bonsai. Harvey will discuss this unique style and demonstrate on two trees, one Evergreen, a Juniper, and one Deciduous, an Elm. There will be a handout relating to the topic as well as examples of this style. The two finished Literati trees will be raffled at the end of the demonstration.

The Literati style has its emphasis on trunk line and movement. It is characterized with a few branches at the top of a long, visually pleasing, twisted trunk. The unglazed pots used for this style are usually small, round and shallow to balance the meager foliage. This style is inspired by the paintings of pine trees that grew in harsh climates, struggling to reach the light of the sun in their rocky surroundings. The idea is to demonstrate that the tree really has to make a great effort to survive.



Award winning Japanese Red Pine  
by Will Hebert



Literati drawing by Norman Haddrick

Harvey Carapella is a retired graphic designer and currently an assistant professor at the Rochester Institute of Technology. He is the current and a past president of our society. For over thirty years he has worked to apply his knowledge of design to the art of bonsai, and has made presentations to several bonsai clubs, and at symposiums, and conferences.

### NEXT MEETING

**Tuesday**

January 25<sup>th</sup>, 2011

**7:00 pm**

### Harvey Carapella Literati Style of Bonsai

**Brighton Town Lodge at  
Buckland Park.  
1341 Westfall Road,  
Rochester, New York  
near corner of Westfall  
and Clinton.**

This Billboard is  
brought to you by:

PRESIDENT:

**Harvey Carapella**

[President@bonsaisocietyofupstateny.org](mailto:President@bonsaisocietyofupstateny.org)

CO-EDITORS:

**Tom Friday**

**Irma Abu-Jumah**

[Billboard@bonsaisocietyofupstateny.org](mailto:Billboard@bonsaisocietyofupstateny.org)

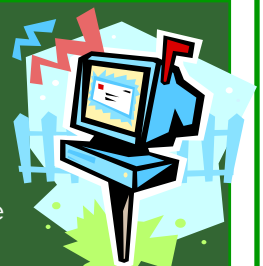
CONTRIBUTORS:

**Mark Arpag**

**William N. Valavanis**

Visit  
our  
revised  
website

Click on the  
link below



## Holiday Party Highlights

Our annual Holiday Party was another huge success. Over forty-two members attended and enjoyed the large variety of delicious goodies, deserts and beverages. The next event after the munching and eating was the presentation of slides of their recent Japan trip by **Bill Valavanis** with comments by **Jane Schuster**, and **Tracy Thieret**. Thanks Jane for your interesting information on the people and the areas you visited! Thank you all for the great pictures and interesting comments about your travels in Japan.

After a short break for some more great goodies, **Harvey Carapella** started our annual Mystery Auction. **Mark Arpag** and **Ron Maggio** (Like the hat!) took bids on the donated and wrapped items. These included: books, wine, calendars, magazines, bonsai pots, a Christmas wreath, pre-bonsai plants, and lots of other first-rate things.

Once again our generous members donated some really wonderful items. The Holiday Mystery Auction is one of our income producing activities each year. The funds raised will be used to bring superior, educational programs to our members. A great big **thank you** to all our members who brought in goodies, items for the auction, and to those who bid and were lucky to get a special prize. Rick Marriott did another great job with the refreshments setup. Many thanks also to Mark and Ron for doing such a great job as our auctioneers.



1



2



3



4



5

1. Jane Schuster tells members her impressions of travels in Japan.

2. Mark Arpag trying to get a higher bid.

3. Ron Maggio taking bids during Mystery Auction.

4 & 5. Lots of great food and goodies for everyone to enjoy.

## 2011 Programs

- ◆ **February 22: Jack Sustic:** Curator, National Bonsai Arboretum-Japanese Bonsai Studies.
- ◆ **March 17, 18, 19, and 20: GardenScape,** Society Display
- ◆ **March 29: Bill Valavanis:** Demo/Workshop, Shohin —Dwarf Pyracantha 'Red Elf'
- ◆ **NEW! April 12: Hiroyoshi Yamaji,** (Japan), Demo
- ◆ **April 26: Kenji Miyata** (Calif.) Demo-Evening Kenji Miyata Workshop-Afternoon
- ◆ **May 21-22 Club Activity:** BSUNY Exhibition with Demos by Harvey Carapella, Mark Arpag, and Peter Waasdorp



## Help Needed For GardenScape 2011

GardenScape 2011 will take place at the Dome Arena in Henrietta on **March 17 to 20**. Our society is again having a display booth at **GardenScape 2011**. We need members to help answer questions and provide the public with information on bonsai and our society. Please see **Bob Pfromm** to schedule your time to help our society inform the public about bonsai.

*We need your fine quality flowering bonsai for the show.*

Please phone **Bill Valavanis** at 334-2595 to offer your bonsai for the society display. We will be setting up our display on **Tuesday, March 15th at 5 pm** and need your help. Also, we will be taking down the display on **Sunday, March 20th at 5 pm** and many hands make light work for everyone.

More information about the show can be found at:  
<http://www.rochesterflowershow.com/>

## Bonsai

### Terms of the Month

**SURFACE ROOTS** - The visible spread of roots above the growing medium at the base of a bonsai. These roots help a bonsai seem grounded and well-anchored and make it look mature, like a full-sized tree.

**DEADWOOD** - The parts of the trunk of a bonsai where bark has been removed and bleached with lime sulfur. A second type of *deadwood* can be seen on a branch or projection of a bonsai. These can be natural as on old collected trees or artificially shaped from unwanted branches.

**AIR LAYERING** - Method of producing new roots from the branches of a tree using moss wrapped in plastic. It is often used as a propagation method.

**MINI BONSAI** - Name given to a bonsai that is less than six inches in height, and can be held in the palm of a hand.

## Where did the library go?

*Nick Montanaro*



Up to the end of last year, the entire library has been available for viewing at our monthly meeting. Since our library continues to grow (100+ books & videos) it is no longer practical to transport the entire library every month. With this in mind, all books and videos can now be ordered online. Members can now go to our website at [bonsaisocietyofupstateny.org](http://bonsaisocietyofupstateny.org) to view the library in its entirety. From the home page, simply click on the **Library** link and follow the easy instructions for ordering books. The books you order will be available for pickup at the next general meeting. If you do not have the means to access our website you can contact me at any of our meetings and I will provide you with a hard copy of the library list.

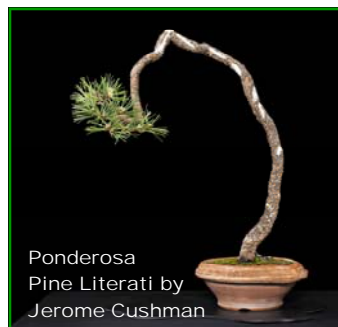
*I would encourage all members to take advantage of this great resource and checkout our library.*

## Officer Election Soon

At the **March meeting** we will be electing our society officers. During the business meeting, the candidates for the offices will be presented and voted on. If anyone has any nominations give one of the nominating committee a call and let them know. Just make sure the person you are nominating knows about it before you call.

### Nominating Committee:

Joe Galley, Chair, 334-9472;  
Jim Dolce, 247-1527 and  
Dave Steele, 671-2438



Ponderosa  
Pine Literati by  
Jerome Cushman

## Moss Use With Bonsai

**M**oss is used by bonsai enthusiasts to add an element to our bonsai that helps with the overall look of the tree. It is put onto the soil surface to give the impression of grass, plants, and the like, growing under the tree. This help however is often canceled out by the fact that moss, if allowed, will keep water from penetrating to the soil below. It can also trap in moisture and not allowing the soil to dry out. This is the reason why it is recommend that moss be applied only to the surface of the soil a short time before showing the bonsai and removed soon after.



Foemina Juniper Bonsai Forest at the National Bonsai and Penjing Museum

Moss can be left on the soil year around, if some simple safety measures are taken. Always leave spaces between the pieces of moss to allow for water penetration and evaporation. Do not put the pieces tightly together. Bill Valavanis

recommends to try to cover the entire surface of the soil with moss if you have it. Also put the moss right up to the edge of the pot, but make sure it is lower than the lip of the pot so water can catch and drain down into the soil. Having the moss look as natural as you can make it will greatly enhance the appearance of your trees. Most dry soil loving trees such as pines and most conifers should have less moss. If your moss on these is green and healthy, chances are that you may be watering too much. For most trees, water as normal but also lightly mist the moss on a daily basis.



Shimpaku Juniper on rock Bonsai



**Bonsai Society of Upstate New York**  
**P.O. Box 92215**  
**Rochester, New York 14692**

